

little corkers

It's not for grown-ups! Or is it...

The Mont Rochelle word search

Find and circle all of the words in the list below.

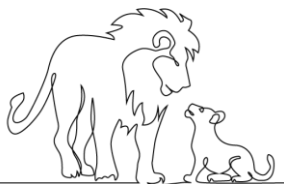
Words can go in any direction and can share letters as they cross over each other.

D	C	D	U	V	D	R	V	W	V	T	E
B	T	A	I	P	E	M	H	W	I	N	M
D	A	N	T	Y	R	I	O	W	N	A	O
R	E	Z	L	A	T	D	I	R	E	H	N
S	J	M	F	E	A	N	L	S	Y	P	K
Y	I	H	O	E	E	V	E	E	A	E	E
L	Q	T	M	L	D	F	T	G	R	L	Y
R	W	M	H	Z	B	S	U	U	D	E	L
K	L	I	O	N	E	P	A	R	G	O	R
M	O	N	T	R	O	C	H	E	L	L	E

blom
cat
elephant
farm
grape

lion
meadow
monkey
montrochelle
red

vines
vineyard
white



MAINS

MAC AND CHEESE (G) (E) (M) (Ga) (V) R130

Penne pasta, cheese sauce, garden herb

GRASS-FED BEEF SIRLOIN (Ga) (M) R 180

Buttered mash, garlic and herb compound butter

CRISPY FISH GOUJON (G) (F) (M) (E) R 140

Chips, salted lemon and garden parsley mayo

BUTTERMILK FREE-RANGE CHICKEN WINGS (M) (G) (Sp) R 140

Chips, home-made BBQ sauce

DESSERTS

CHOCOLATE BROWNIES (M) (E) (N) (V) R 95

Vanilla ice cream

HOMEMADE ICE CREAM (M) (E) (V) R 90

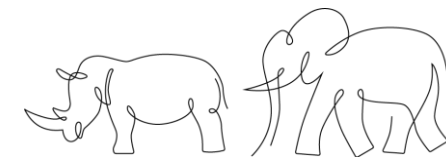
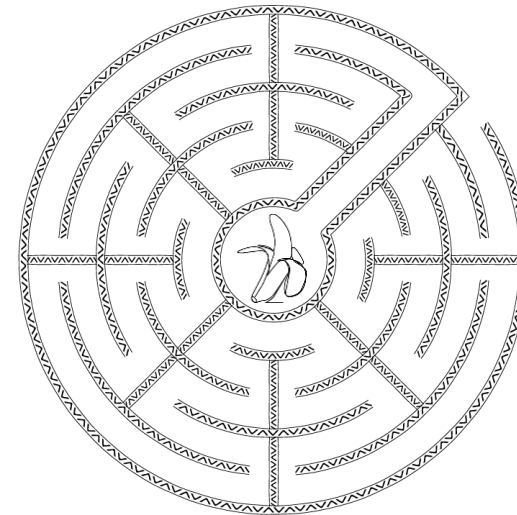
Chocolate sauce

Did you know...? We have a resident cat called Blom which is the Afrikaans word for flower. Have you seen her on your adventures yet?



C) Celery (CI) Cereals with gluten (Cr) Crustacean (E) Eggs (F) Fish (L) Lupin (G) Gluten (M) Milk (Mo) Molluscs (Mu) Mustard (N) Nuts (P) Peanuts (Ss) Sesame (S) Soya (Sp) Sulphur Dioxide (V) Vegetarian.

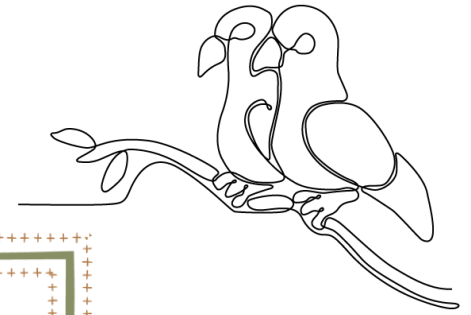
Can you help this cheeky chap find his missing banana in the maze?



Have you spotted our resident rhino and elephant yet? You'll find them living at the Country Kitchen or by the pool (don't worry they're not real!!)

Create your very own Mont Rochelle masterpiece

To reveal the final picture, use the code below to match each number to a colour. The more you colour in, the more your masterpiece will come to life!



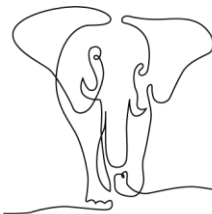
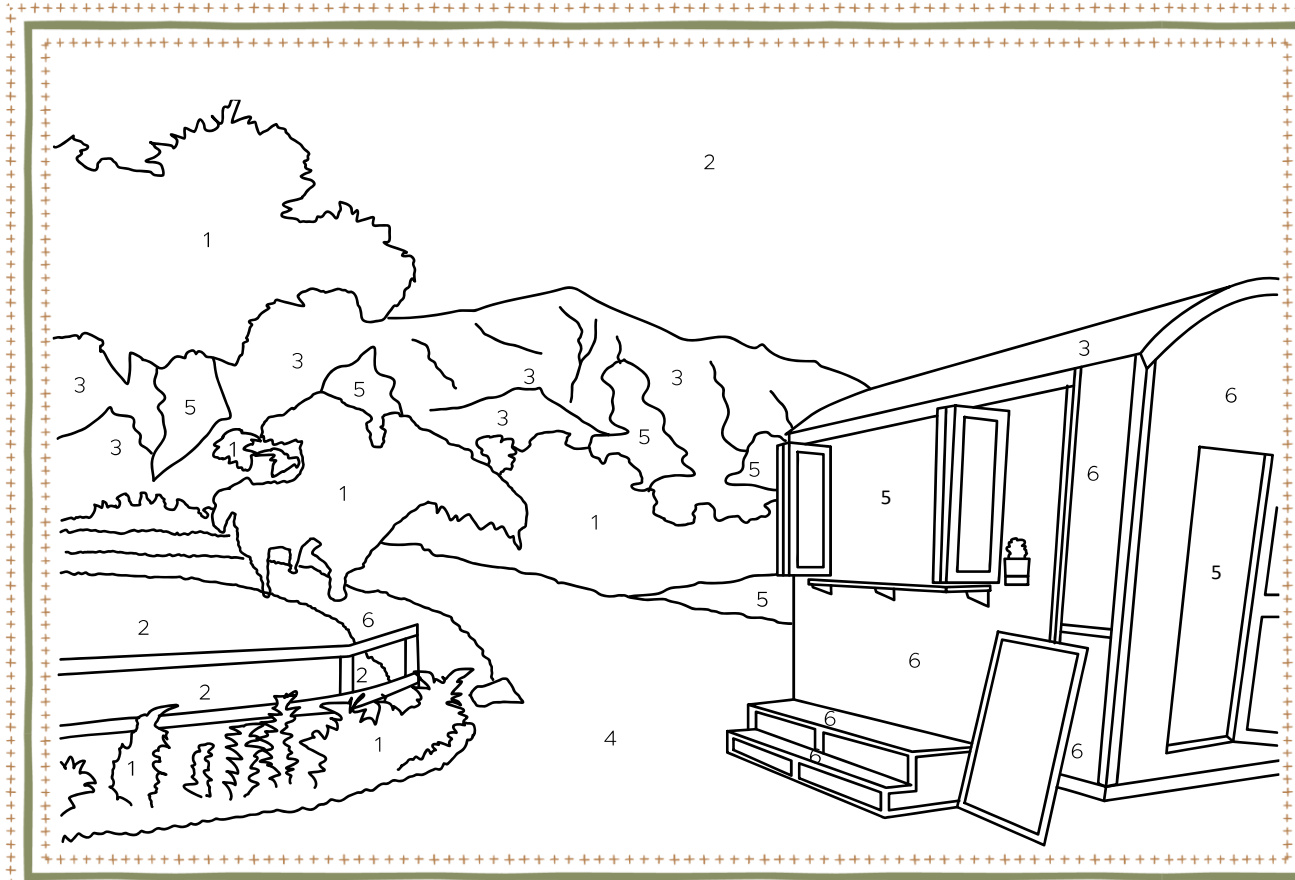
Did you know, Mont Rochelle is over 100 acres, that's approximately 50 football pitches!



Can you un-scramble the hidden words?

- CAAIFR -----
- INOL -----
- HPEANLET -----
- IDEILLFW -----
- EYKONM -----
- GRPASE -----
- FORSLWE -----
- INESNSHU -----
- ODFO -----
- EIFFAGR -----

Word scramble answers: Africa, Lion, Elephant, Wildlife, Monkey, Grapes, Flowers, Sunshine, Food, Giraffe



- 1. Dark Green
- 2. Blue
- 3. Brown
- 4. Light Green
- 5. Dark Brown
- 6. Orange

By:
Age:

What very tall animal do you think is hidden here? Join the dots and find out.

